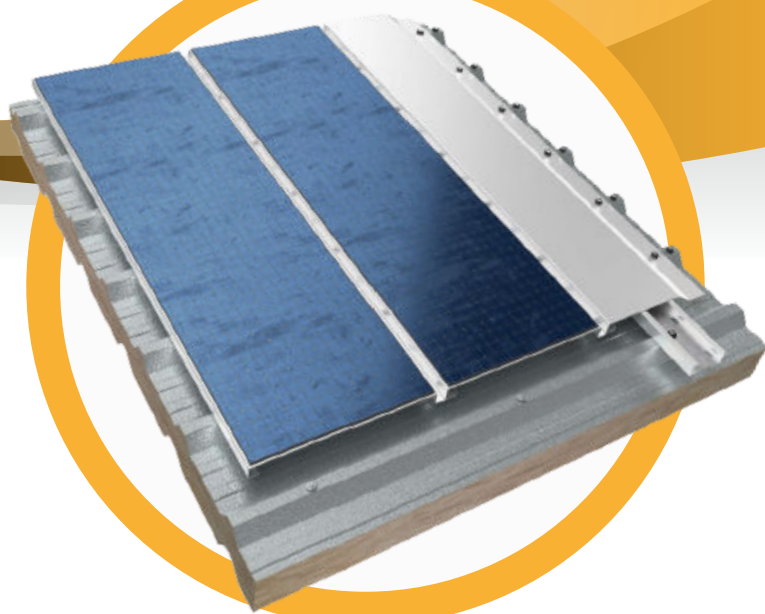


# METEKTRON

## THE RETROFIT CIGS PV SYSTEM

METEKTRON from BiPVco is a lightweight, universal, retrofit Solar PV system designed for industrial and commercial buildings that cannot support the weight of a conventional Solar PV array.

METEKTRON incorporates CIGS Copper Indium Gallium Selenide thin-film solar panels bonded directly to an aluminium cassette and is supplied as a complete kit comprising integrated PV panel and cassette, attachment clips, screws, flashings, cable trays and MC4 inter-connectors. METEKTRON can be fixed to most trapezoidal and composite panel roofs and weighs less than 7kg/m<sup>2</sup> installed.



### FEATURES AND BENEFITS

- High-efficiency, lightweight thin-film CIGS solar panels
- Contains no glass or soldering for ultimate panel durability
- Self-cleaning barrier film reducing panel maintenance
- Superior low light performance Vs. crystalline silicon
- Integral bypass-diode panel architecture for optimum shading performance
- Lightweight and durable aluminium cassette design with integral recess drainage
- Concealed extruded bi-directional aluminium brackets with integral lateral micro-ribs and pre-punched 6.5mm dia. fixing holes
- Central fixed point position
- No cold bridging and accommodates thermal movement
- Excellent resistance to wind loads
- No additional mounting system required
- 6.8kg/m<sup>2</sup> installed weight
- Simple installation and connection procedure with concealed junction boxes

### DIMENSIONS

#### Aluminium Cassette:

- Module: 400mm
- Length: 2970mm
- Height: 30mm
- Rib recess: 20mm
- Clip: 80mm

#### CIGS Solar PV 135W Panel:

- Width 358mm
- Length 2960mm
- Thickness 3.5mm

The information contained within this document is correct at the time of publication but BiPV Limited (The Company) does not accept liability for errors or information found to be misleading. The Company reserves the right to change product details and specifications without prior notice.

